
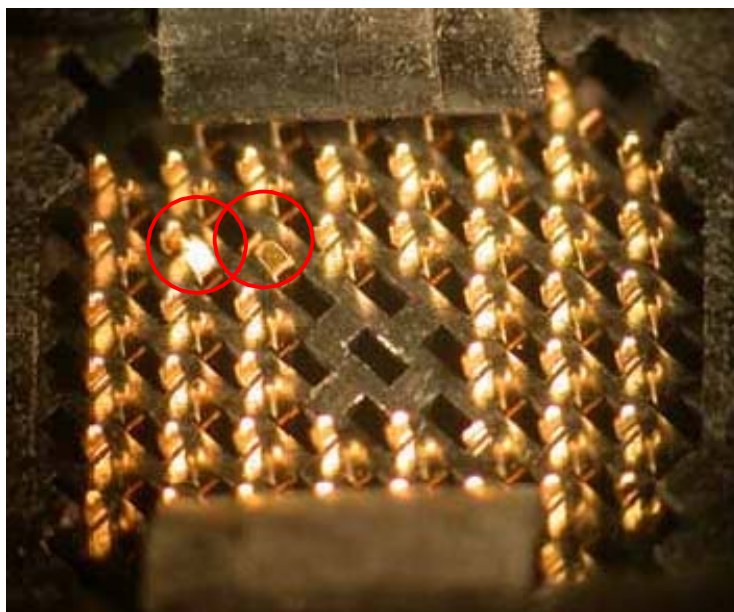


BGA 测试座损坏的分析报告

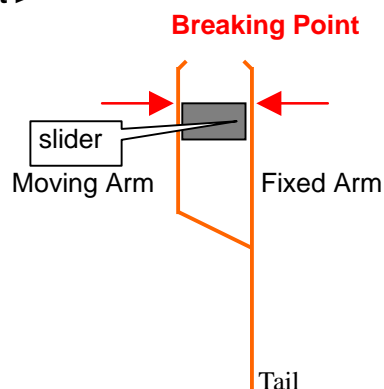
Classification	Complaint =>Customer: Dejitong	
Description	Contacts were chipping after 2000-3000 cycle tests. (Poor durability)	
Rejected Q'ty	3 / 100 =>Incidence: 3.0%	
Detected on	NOV 2007	
Product	CSP Socket	777A1056H102C
LOT No.	07042401 =>Shipped on: MAY08, 2007	

Findings We found that some contacts were broken at the top.

< Return 1 >



< Pinch Contact >



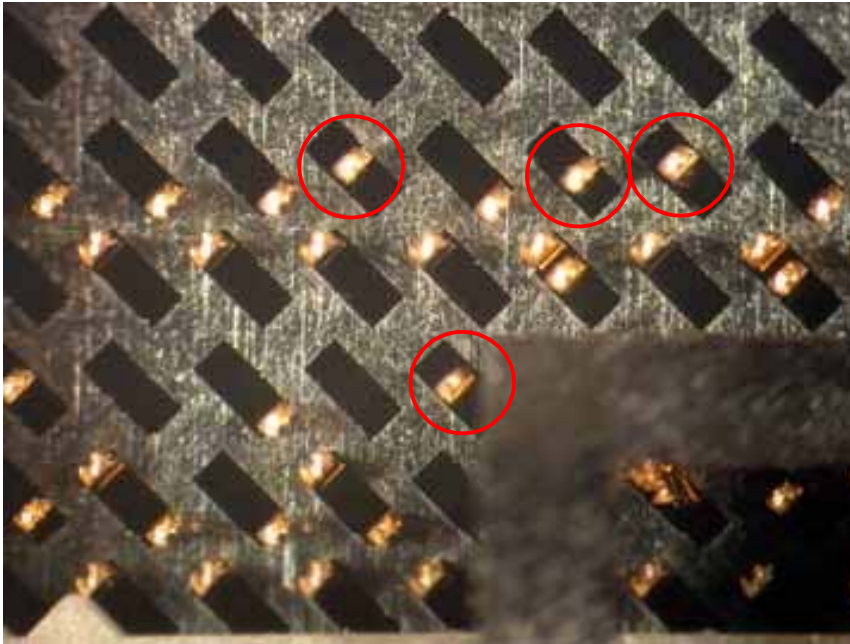
* Breaking Points were almost same height
with the top of slider.

BGA 测试座损坏的分析报告

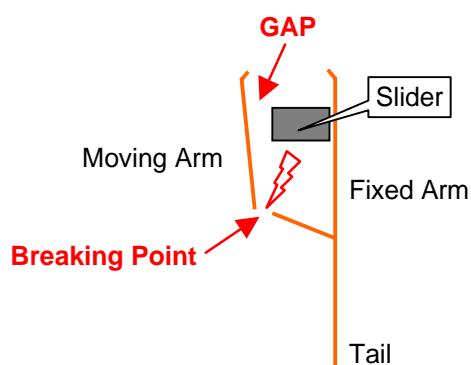
Durability & Metal Fatigue

CSP sockets are guaranteed 10,000 time actuations typically. Over 10,000 time actuations, some contacts may show the metal fatigue and break as below.

< Reference >



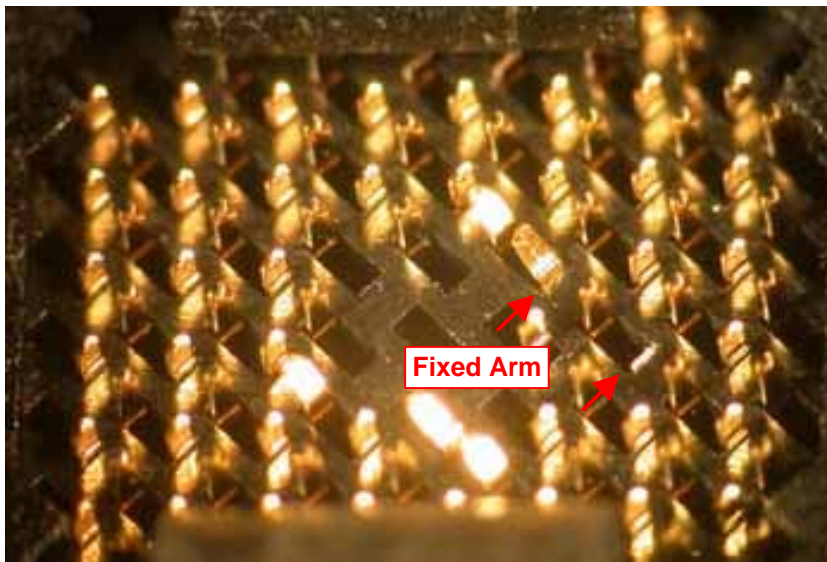
* We can find the gap between contact and slider.



* The metal fatigue shall arise not on the fixed arm but the moving arm.

We found that some fixed arms were broken on the returned socket.

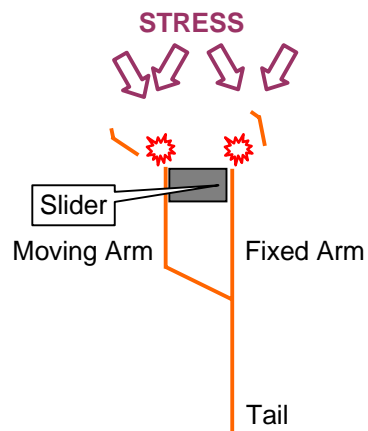
< Return 2 >



BGA 测试座损坏的分析报告

Estimated Root Cause

Some kinds of physical stress or damage should hit on the top of contact.



NOTE !

One tail pin of PCB was already bent on the arrival which please note.

