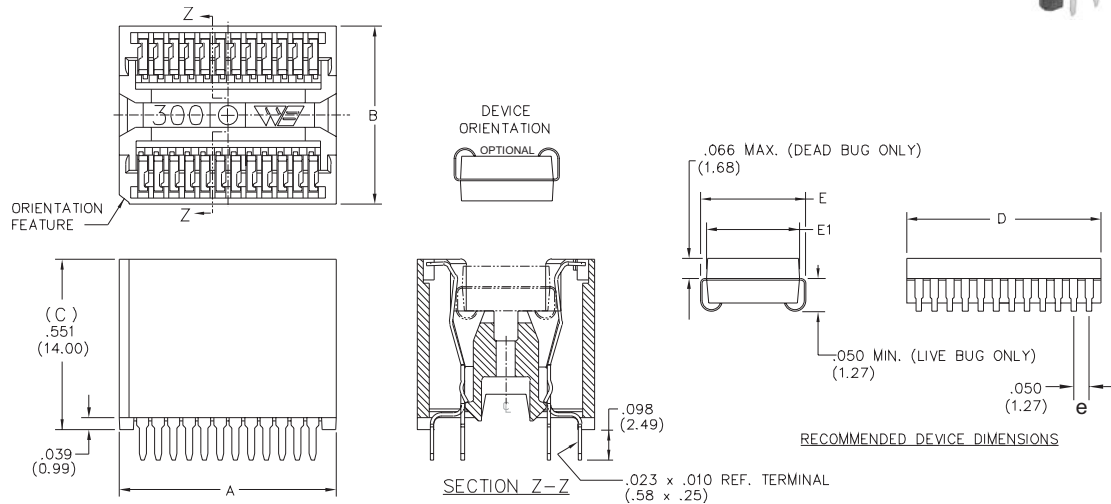
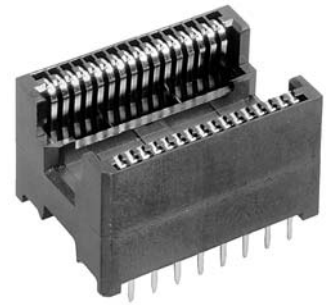


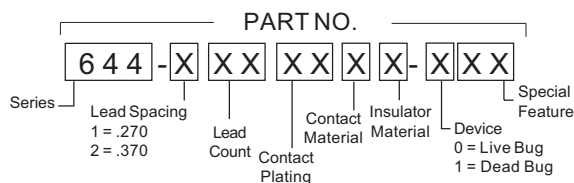
644 Series Direct Entry SOJ Socket

- Preloaded high normal force contacts
- Staggered contact tails provide .100" x .100" pin out spacing
- Allows probing of contacts with device in place
- Live bug or dead bug insertion
- Center "sword" slot and index hole allow automatic loading and unloading of the device



Lead Count	Pitch e (mm)	Package Dimensions (mm)			Part Number	Socket Dimensions (mm)		
		Width (E1)	Lead Tip to Tip (E)	Length (D)		Length (A)	Width (B)	Height (C)
20	.050 (1.27)	.300 (7.62)	.339 (8.61)	.675 (17.14)	644-1200312-001	.775 (19.69)	.574 (14.58)	.551 (14.00)
20	.050 (1.27)	.300 (7.62)	.339 (8.61)	.675 (17.14)	644-1200312-002	.750 (19.05)	.574 (14.58)	.551 (14.00)
20	.050 (1.27)	.300 (7.62)	.339 (8.61)	.675 (17.14)	644-1200312-003	.795 (20.19)	.574 (14.58)	.551 (14.00)
24	.050 (1.27)	.300 (7.62)	.339 (8.61)	.624 (15.85)	644-1240312	.700 (17.78)	.574 (14.58)	.551 (14.00)
26	.050 (1.27)	.300 (7.62)	.339 (8.61)	.675 (17.14)	644-1260312-001	.775 (19.69)	.574 (14.58)	.551 (14.00)
26	.050 (1.27)	.300 (7.62)	.339 (8.61)	.675 (17.14)	644-1260312-002	.750 (19.05)	.574 (14.58)	.551 (14.00)
26	.050 (1.27)	.300 (7.62)	.339 (8.61)	.675 (17.14)	644-1260312-003	.795 (20.19)	.574 (14.58)	.551 (14.00)
28	.050 (1.27)	.300 (7.62)	.339 (8.61)	.724 (18.38)	644-1280312	.800 (20.32)	.574 (14.58)	.551 (14.00)
28	.050 (1.27)	.400 (10.16)	.439 (11.15)	.724 (18.38)	644-2280312	.800 (20.32)	.674 (20.32)	.551 (14.00)
32	.050 (1.27)	.300 (7.62)	.339 (8.61)	.819 (20.80)	644-1320312	.950 (24.13)	.574 (14.58)	.551 (14.00)
32	.050 (1.27)	.400 (10.16)	.439 (11.15)	.819 (20.80)	644-2320312	.950 (24.13)	.674 (20.32)	.551 (14.00)
36	.050 (1.27)	.400 (10.16)	.439 (11.15)	.924 (23.47)	644-2360312	1.050 (26.67)	.674 (20.32)	.551 (14.00)
40	.050 (1.27)	.400 (10.16)	.439 (11.15)	1.024 (26.01)	644-2400312	1.150 (29.21)	.674 (20.32)	.551 (14.00)
42	.050 (1.27)	.400 (10.16)	.439 (11.15)	1.075 (27.31)	644-2420312-014	1.200 (30.48)	.702 (17.83)	.551 (14.00)
44	.050 (1.27)	.400 (10.16)	.439 (11.15)	1.124 (28.55)	644-2440312-014	1.250 (31.75)	.702 (17.83)	.551 (14.00)

DESCRIPTION & ORDERING INFORMATION

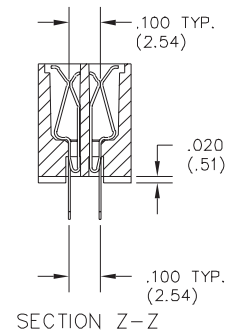
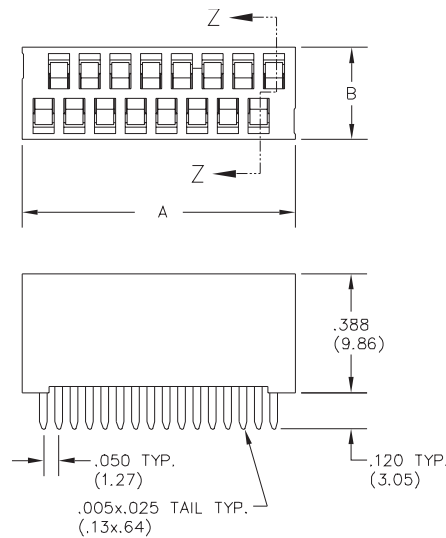


MATERIALS & SPECIFICATIONS

- Socket Body: PPS or Equivalent
- Contact: Beryllium Copper Alloy
- Contact Plating: Gold over Nickel
- Contact Normal Force: 60 grams
- Contact Resistance: 25 mΩ
- Dielectric: 600V AC for 2 minutes
- Temperature Rating: 150°C
- Durability: 10,000 cycles min.

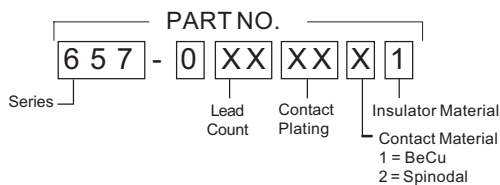
657 Series ZIP Socket

- Dual face-wipe contacts for long, dependable life
- Wide target area for easy entry and removal of device
- Designed for fully automatic load and unloading of devices
- Sockets manufactured for high humidity tests



Lead Count	Pitch e (mm)	Part Number	Socket Dimensions (mm)	
			Length (A)	Width (B)
16	.050 (1.27)	657-0160311	.890 (22.61)	.300 (7.62)
20	.050 (1.27)	657-0200311	1.090 (27.69)	.300 (7.62)
24	.050 (1.27)	657-0240311	1.290 (32.77)	.300 (7.62)
28	.050 (1.27)	657-0280311	1.490 (37.85)	.300 (7.62)
32	.050 (1.27)	657-0320311	1.790 (45.47)	.300 (7.62)
40	.050 (1.27)	657-0400311	2.090 (53.09)	.300 (7.62)

DESCRIPTION & ORDERING INFORMATION

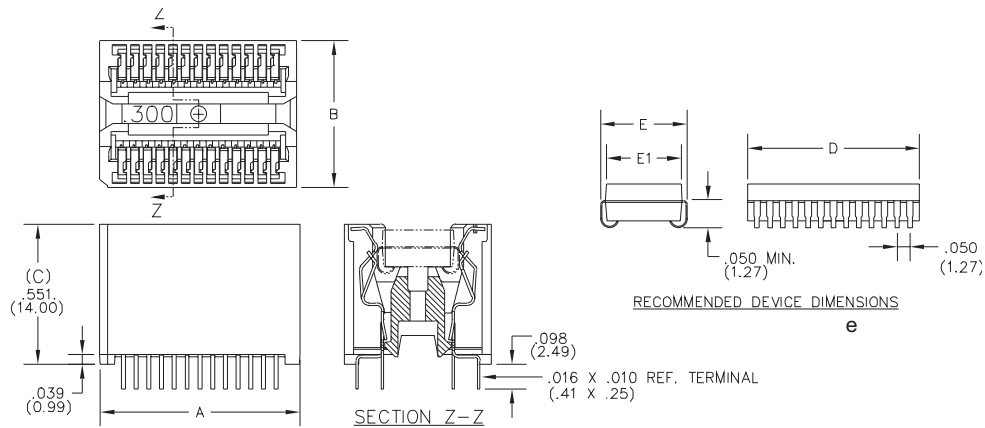


MATERIALS & SPECIFICATIONS

- Socket Body: PEI or Equivalent
- Contact: Beryllium Copper Alloy
- Contact Plating: Gold over Nickel
- Contact Insertion Force: 15 grams
- Contact Withdrawal Force: 8 grams
- Contact Resistance: 20 mΩ
- Dielectric: 600V AC for 2 minutes
- Temperature Rating: 150°C
- Durability: 10,000 cycles min.

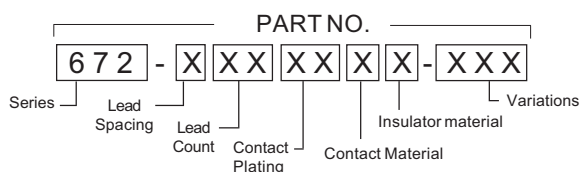
672 Series Direct Entry Dual Beam SOJ Socket

- Preloaded high normal force contacts
- Staggered contact tails provide .100" x .100" pin out spacing
- Allows probing of contacts with device in place
- Live bug insertion
- Center "sword" slot and index hole allow automatic loading and unloading of the device
- Dual beam contact provides two points of wipe on each device lead
- Contact overstress protection



Lead Count	Pitch e (mm)	Package Dimensions (mm)			Part Number	Socket Dimensions (mm)		
		Width (E1)	Lead Tip to Tip (E)	Length (D)		Length (A)	Width (B)	Height (C)
20	.050 (1.27)	.300 (7.62)	.339 (8.61)	.676 (17.17)	672-1200311-001	.775 (19.69)	.574 (14.58)	.551 (14.00)
20	.050 (1.27)	.300 (7.62)	.339 (8.61)	.676 (17.17)	672-1200311-002	.750 (19.05)	.574 (14.58)	.551 (14.00)
20	.050 (1.27)	.300 (7.62)	.339 (8.61)	.676 (17.17)	672-1200311-003	.795 (20.19)	.574 (14.58)	.551 (14.00)
24	.050 (1.27)	.300 (7.62)	.339 (8.61)	.626 (15.90)	672-1240311	.700 (17.78)	.574 (14.58)	.551 (14.00)
24	.050 (1.27)	.300 (7.62)	.339 (8.61)	.676 (17.17)	672-1260311-008	.750 (19.05)	.574 (14.58)	.551 (14.00)
26	.050 (1.27)	.300 (7.62)	.339 (8.61)	.676 (17.17)	672-1260311-001	.775 (19.69)	.574 (14.58)	.551 (14.00)
26	.050 (1.27)	.300 (7.62)	.339 (8.61)	.676 (17.17)	672-1260311-002	.750 (19.05)	.574 (14.58)	.551 (14.00)
26	.050 (1.27)	.300 (7.62)	.339 (8.61)	.676 (17.17)	672-1260311-003	.795 (20.19)	.574 (14.58)	.551 (14.00)
28	.050 (1.27)	.300 (7.62)	.339 (8.61)	.726 (18.44)	672-1280311	.800 (20.32)	.574 (14.58)	.551 (14.00)
28	.050 (1.27)	.400 (10.16)	.439 (11.15)	.726 (18.44)	672-2280311	.800 (20.32)	.674 (17.12)	.551 (14.00)
32	.050 (1.27)	.300 (7.62)	.339 (8.61)	.826 (20.98)	672-1320311	.945 (24.00)	.574 (14.58)	.551 (14.00)
32	.050 (1.27)	.400 (10.16)	.439 (11.15)	.826 (20.98)	672-2320311	.950 (24.13)	.674 (17.12)	.551 (14.00)
36	.050 (1.27)	.400 (10.16)	.439 (11.15)	.926 (23.52)	672-2360311	1.050 (26.67)	.674 (17.12)	.551 (14.00)
40	.050 (1.27)	.400 (10.16)	.439 (11.15)	1.026 (26.06)	672-2400311	1.150 (29.21)	.674 (17.12)	.551 (14.00)
42	.050 (1.27)	.400 (10.16)	.439 (11.15)	1.069 (27.15)	672-2420311-004	1.200 (30.48)	.702 (17.83)	.551 (14.00)
44	.050 (1.27)	.400 (10.16)	.439 (11.15)	1.123 (28.52)	672-2440311-004	1.250 (31.75)	.702 (17.83)	.551 (14.00)

DESCRIPTION & ORDERING INFORMATION



MATERIALS & SPECIFICATIONS

- Socket Body: PPS, PEI, or Equivalent
- Contact: Beryllium Copper Alloy
- Contact Plating: Gold over Nickel
- Contact Normal Force: 25 grams
- Contact Resistance: 25 mΩ
- Dielectric: 600V AC for 2 minutes
- Temperature Rating: 150°C
- Insulation Resistance: 20 MΩ @ 100V DC
- Durability: 5,000 cycles min.