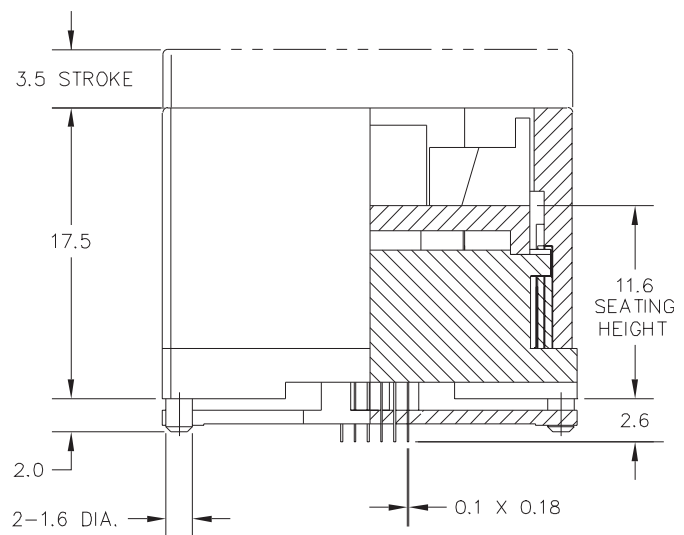
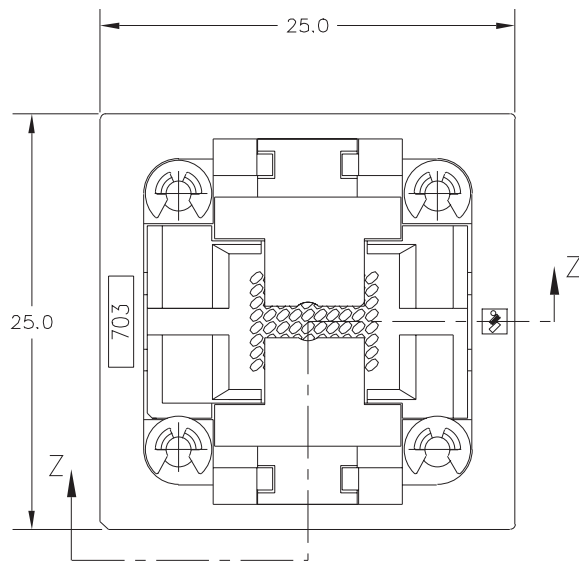
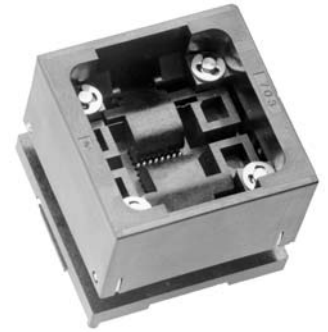


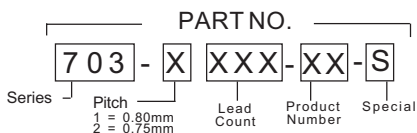
703 Series Open Top CSP Socket

- Zero Insertion Force design for automatic loading
- Patented “Y” contact
- Mechanical ejection plate
- For 0.75mm and 0.80mm pitch packages



SECTION Z-Z
AT FULL STROKE

DESCRIPTION & ORDERING INFORMATION



MATERIALS & SPECIFICATIONS

- Socket Body: PES, PEI, LCP or Equivalent
- Contact: Beryllium Copper Alloy
- Contact Plating: 20 microinches gold over 40 microinches of nickel underplate in contact area; gold flash on solder tail
- Insulation Resistance: 1000 MΩ @ 500V DC
- Dielectric: 700V AC for 1 minute
- Temperature Rating: 150°C
- Contact Resistance: 100 mΩ max.
- Contact Normal Force: 13 grams
- Durability: 10,000 cycles min.