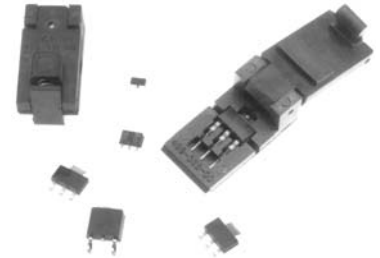
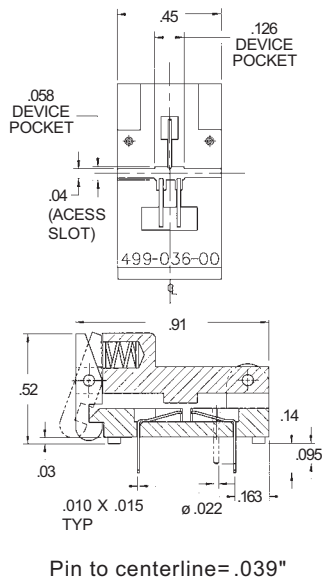


## 499 Series Surface Mount Family of SOT & TO Device Sockets

- Wide product selection
- Gold contact plating
- High temperature materials
- Low insertion force
- Small outlines for greater board density

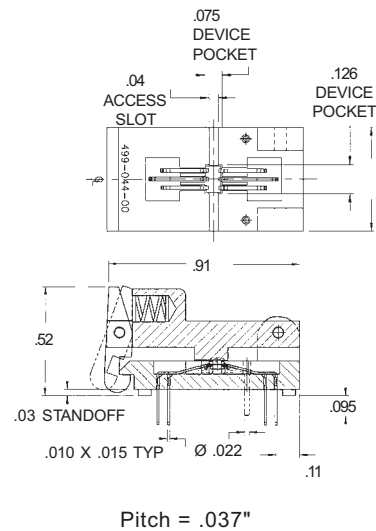


### 499-P36-10-T0-236-3 Lead SOT-23 Sockets

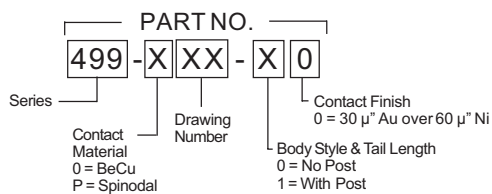


### 499-P43-10-5 Lead SOT-23 Sockets

### 499-P44-10-6 Lead SOT-23 Sockets



## DESCRIPTION & ORDERING INFORMATION



## MATERIALS & SPECIFICATIONS

- Socket Body: PPS or Equivalent
- Contact: Beryllium Copper Alloy or Spinodal
- Contact Plating: Gold over Nickel
- Contact Resistance: Less than 10 m $\Omega$
- Dielectric: 1,000V AC (RMS) for 1 minute
- Temperature Rating: -55°C to +155°C
- Current Rating: Exceeds device